

Lahore Southern Bus Terminal

Project Background and Issues:

MVA Asia Ltd was commissioned to provide transport consultancy services to assist in the feasibility investigation into a proposed BOT terminal and transport interchange for provincial buses. A site was identified in southern Lahore for a terminal / interchange for provincial (inter-city) buses.

In Lahore, provincial buses enter and leave via certain main highways, and generally deposit and pick up passengers at numerous locations throughout the city. This is convenient for passengers, but adds undesirable bus traffic and congestion to the city streets.

Although there is a terminal for the provincial buses in the northern part of the city, near the Fort, one was lacking for the southern areas. It was intended that many or all of these southern routes would be required to terminate at the proposed southern bus terminal. In order that passengers can still reach their ultimate destinations within the city, this implied that the proposed terminal must be served by urban transport systems with sufficient capacity and network penetration to transfer the provincial passengers.

MVA identified the following key issues in order to implement the planned southern bus terminal:

- ▶ Require and enforce the provincial buses to use the new terminal rather than the small terminals within the city
- ▶ Prevent the provincial buses from collecting and depositing passengers at informal bus stops within the city
- ▶ Restructure and / or facilitate urban transport systems to serve the new terminal

Since these changes would bring up sensitive issues, such as transfer between modes at the new terminal, longer journey time, and additional fares for passengers, the Government was advised to address public objections, and possibly provide subsidies in some form for the inconvenience.

Feasibility Study Tasks:

Data collection

- ▶ Details of all provincial bus routes entering and leaving Lahore:
 - Origin city and terminal destination within Lahore
 - Pick-up and drop-off points along the routes
 - Frequencies and types of bus

Fares

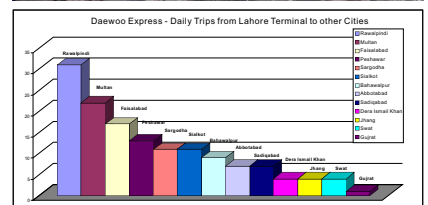
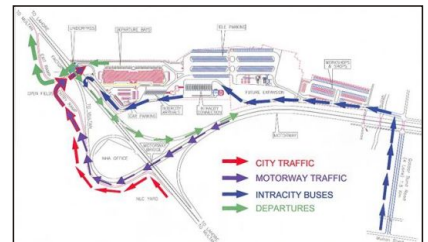
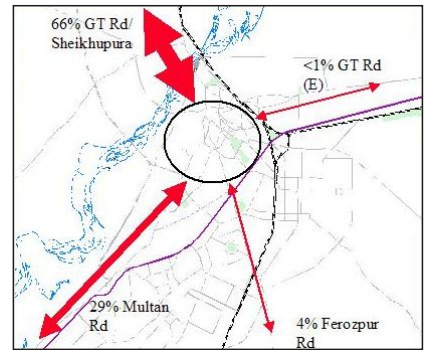
- ▶ Passenger volumes (daily average) by route
- ▶ Variations in demands at peak times / festivals etc
- ▶ Operating costs of terminals:
 - Fees for usage of in-city terminals within Lahore
 - Parking and layover costs
- ▶ Maintenance and layover facilities
- ▶ Ultimate origin / destinations within Lahore of passengers using the provincial buses
- ▶ Growth trends in patronage demands for provincial buses in recent years by route or sector if possible
- ▶ Demographic and economic forecasts for the city and region

Demand Analysis:

- ▶ Overall demands for Lahore city
- ▶ Directional distribution
- ▶ Split by type of bus and fare structures
- ▶ Passenger origin / destinations within Lahore
- ▶ Future growth trends

Sizing and Layout Concepts for Proposed Terminal / Interchange:

- ▶ Required numbers of arrival and departure bays for provincial buses
- ▶ Estimated / guidelines for layover spaces, servicing areas, etc for provincial buses
- ▶ Required provisions for urban transport services by mode, including parking areas, pick-up / drop-off areas, etc
- ▶ Broad sizing of the above
- ▶ Overall traffic circulation concepts and space requirements for the provincial and urban transport services
- ▶ Indicative requirements for passenger facilities, waiting areas, ticketing halls, etc
- ▶ Traffic access routes and connections onto external roads and traffic routes



Note :

The above quoted figures are indicative only.

MVA Head Office in Asia

26/F China Resources Building
26 Harbour Road
Wanchai Hong Kong

Tel : (852) 2529 7037
Fax : (852) 2527 8490
mva@mva.com.hk
www.mvaasia.com

